

Vectorworks® Architect 2011

Realize Your Most Inspired Visions



Vectorworks® Architect 2011

Realize Your Most Inspired Visions

Flexible:

Enjoy the Freedom to Design the Way You Want

Versatile:

Create, Model, and Present with One Application

Intuitive:

Work the Way You Think

Smart:

Make a Good Investment in Yourself

This is no ordinary year.

This is a milestone release for the Vectorworks Architect program. Incredible changes will transform your work—and your world—for the better. With Vectorworks Architect 2011 software, you can take charge with robust new BIM capabilities that are simple to implement and make collaboration a breeze. Design like never before in a free and fluid 3D environment. Enhance your designs and presentations with exceptional text capabilities, and many other new and improved features, and then render your designs beautifully with our powerful new rendering engine. This breakthrough release will have a dramatic impact on both your workflow and your designs.

Flexible:

Enjoy the Freedom to Design the Way You Want

With the Vectorworks Architect program, you're not limited to a prescribed workflow, so you have the freedom to work the way you want to work. Incorporate your existing approach to design to make the best use of the skills you already have in-house. Collaborate seamlessly with co-workers and colleagues with other software applications. Here are some of the compelling reasons to purchase or upgrade:

- Use a quick sketch or a simple diagram when that's all you need.
- Put together winning 2D/3D presentations when you're still competing for the job and don't have the time or budget to make the investment in a detailed BIM approach.
- Turn your project team loose with the outstanding production tools of the Vectorworks software.
- Incorporate BIM technology when it's right for the client and project—without turning the firm upside down.



Courtesy of Arch & Tecco

Freeform Modeling

Whether you're working in 2D or 3D, unified view mode lets you draft or model within a unified coordinate system. With an intuitive interface, you can design from any 3D view, and enjoy the superior quality that allows you to manipulate your model with ease. More accurate object information and better snapping make drawing in 3D so easy. The SmartCursor™ helps you by showing hints, like the angle from the previous segment, as you draw. Plus, an advanced suite of solids and NURBS surface tools allows you to create any shape and easily explore organic geometry. Blend, twist, sculpt, deform, or punch holes. Anything's possible with the Vectorworks Architect 2011 software.

Going Beyond the Building

Make the entire design stand out. Architecture is more than just the building. With the Vectorworks Architect program, you can design anything—graphics, interior details, hardware, furniture, fittings, or whatever you can imagine—without having to learn or use additional applications.

Efficient Workgroup Capabilities

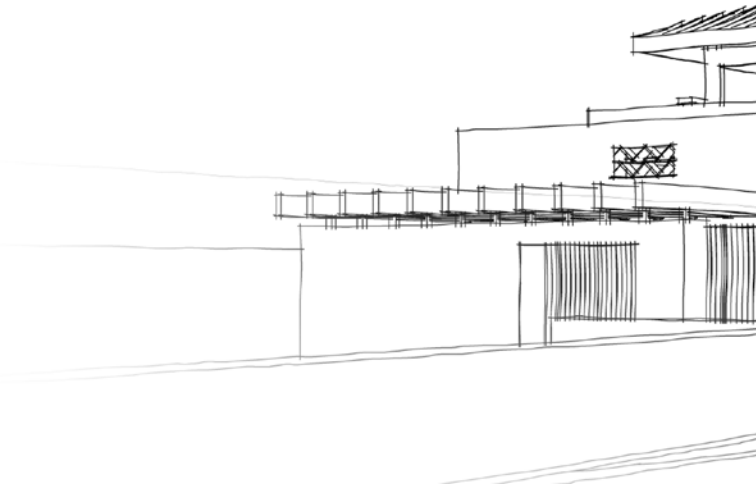
Break up complex projects. Whether you're a sole practitioner collaborating with other professionals or a large firm dividing work among different members of the team, workgroup referencing provides a flexible way to split even the most complicated project into manageable pieces.

Easy File Translation

Get on the cutting edge of digital practice, and move your building models fluidly between design, analysis, and construction packages with Vectorworks' IFC 2x3 translator. Import and export AutoCAD® 2011 (and earlier) files. Send out drawing sets as multi-page PDFs.

Supporting Sustainable Building

When your goal is sustainability, the Vectorworks Architect application is an indispensable tool. You can maximize materials and minimize energy expenditure with our built-in spreadsheets that calculate building performance through programming analysis (with parametric Space objects), detailed material take-offs, and lighting requirements. You can conduct sun studies with the solar animation command. And you can export data-rich building models using the Industry Foundation Classes (IFC) 2x3 interoperability standard used by energy simulation, material take-off and costing, and 4D construction sequencing applications. With such comprehensive data, you'll answer the "how many" and "how much" very early in the process, and ensure a smaller carbon footprint.



Google Friendly

Import concept models from SketchUp® and access thousands of models from Google's 3D Warehouse. Export 3D models to Google Earth®.

Endless Digital Images

Make your work even more compelling and easier to communicate with digital imagery. Import scans, digital photos, or web images. Import or export a wide array of image files, including Illustrator® EPS and native Photoshop® PSD files. Also, export your design for inclusion into your firm's marketing materials or website.

Cutting Edge 3D

See it in 3D. Send models to CAD/CAM machines, CNC routers, and other 3D printers. The Vectorworks Architect package supports a number of standard 3D file formats, including Parasolid X_T, IGS, SAT, KML, STL, and 3DS.



Courtesy of Daniel Jansenson



Courtesy of © Michael Schanné - www.av1architekten.de

Versatile:

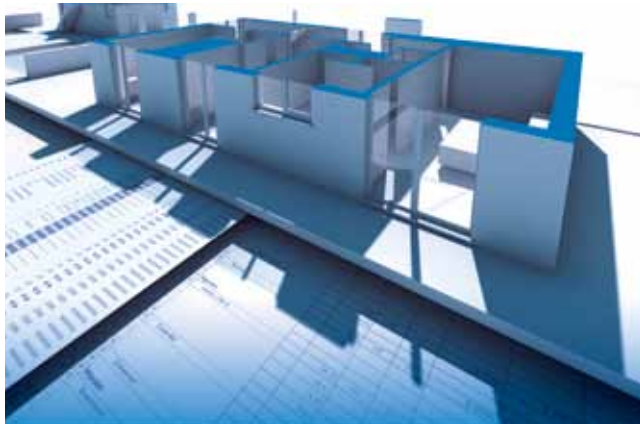
Create, Model, and Present with One Application

Move easily between tasks. From design concepts to construction documentation and every design phase in between, the Vectorworks Architect product marries precision drafting and flexible modeling with state-of-the-art technology. Create, model, and present easily and precisely with one application. With Vectorworks Architect software, you can do it all.

The program boasts a comprehensive set of design tools to support your entire practice. You have complete functionality for:

Powerful Conceptualization

Find your inspiration and start drawing. Or if you would like, import hand sketches, pictures of the site, and even documents from other applications. Invoke ideas in 2D, and explore them in 3D with freeform models.



Courtesy of © Design Express



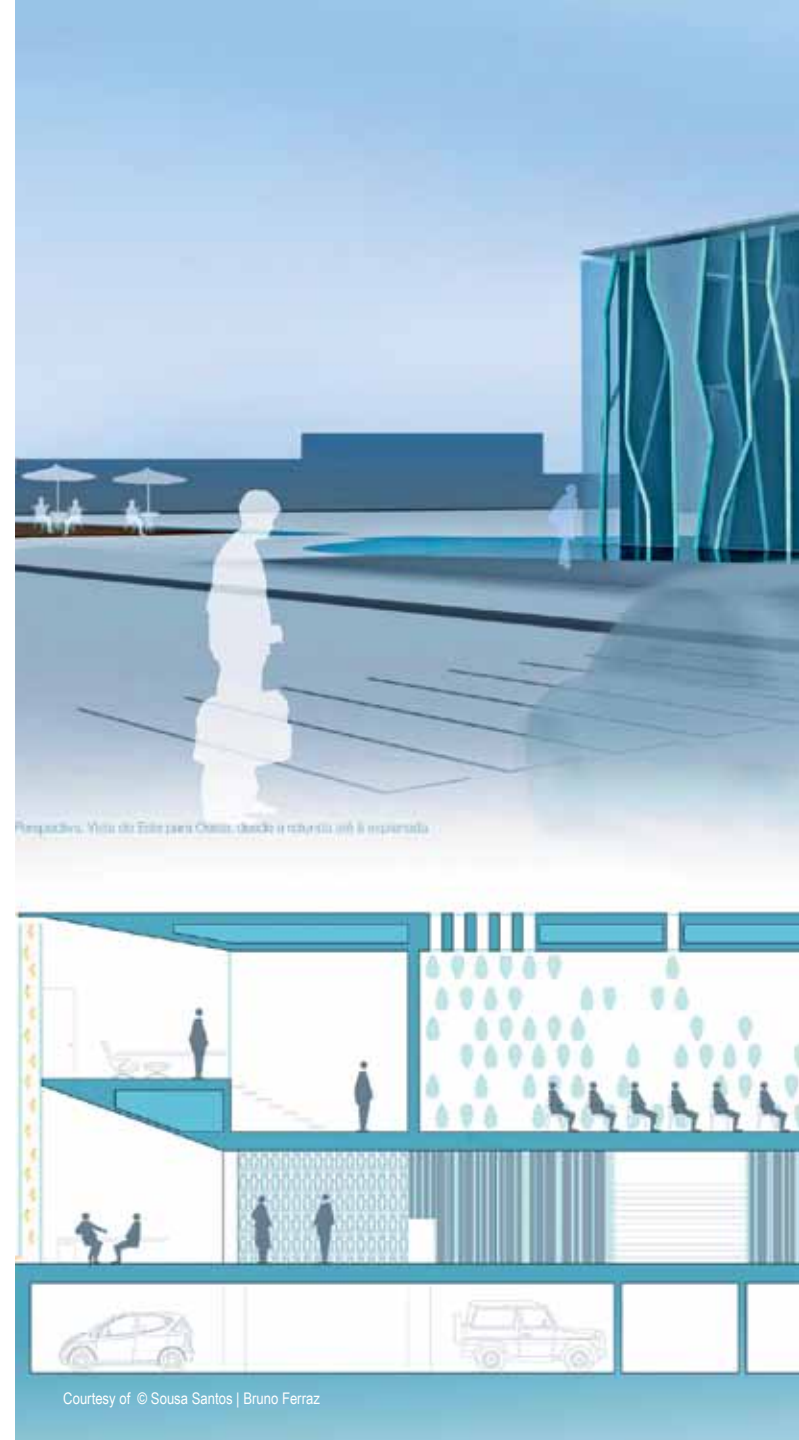
"I don't think I ever saw such an overflow of fulfilled desires in a release. I have no idea how you managed to do all this in such a short time."

-Carlotta Birelli, Architect, Düttmann + Kleymann

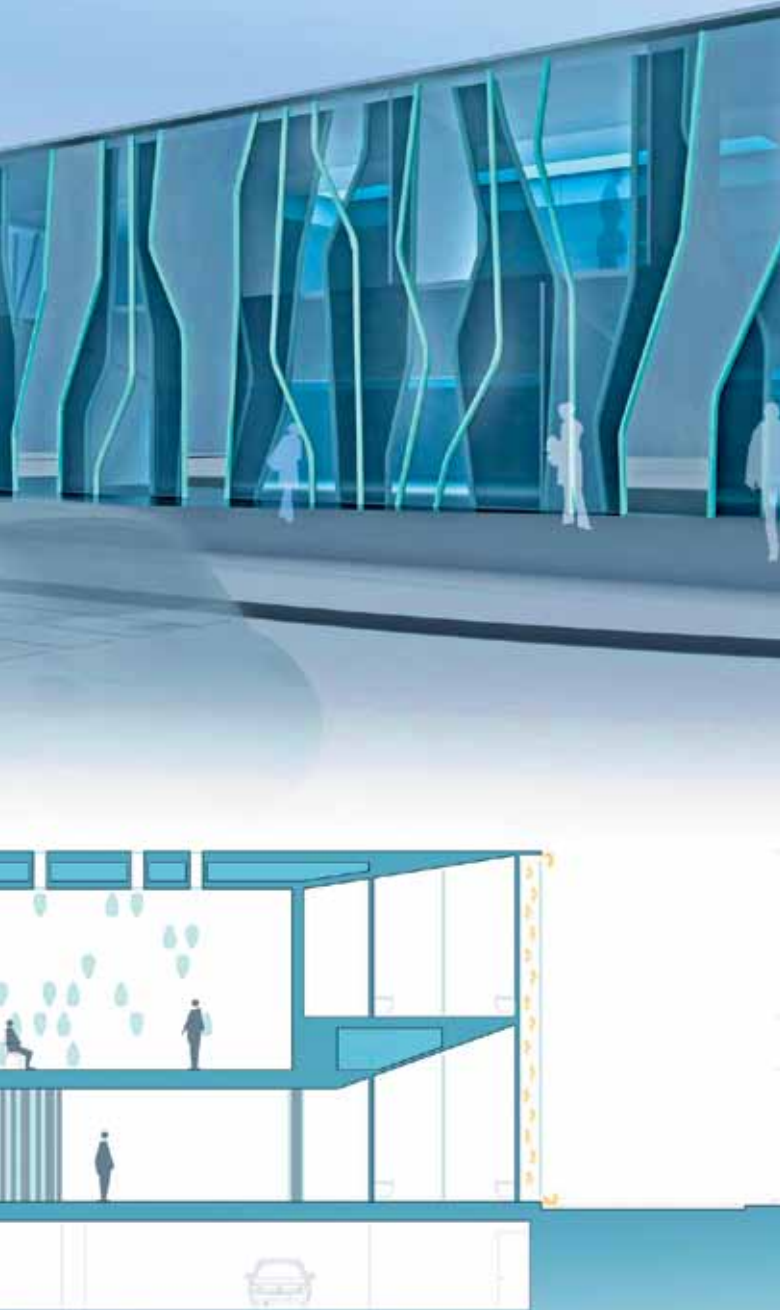
Innovative Building Information Modeling (BIM)

Whether you're streamlining costs, analyzing materials, increasing your energy efficiency, or just creating sophisticated designs, Vectorworks Architect's powerful BIM tools work hard for you. You can implement them at any phase, and they feature the smooth collaboration, focus on design, advanced documentation, and intelligent tools that Vectorworks software is known for.

With innovative and leading parametric technologies at its core, the Vectorworks Architect product has brought the most powerful tools for design to the BIM process. Our program ensures you the best possible platform for making the change to BIM easy. It uses the world's most robust 3D modeling engine, Parasolid, to tackle the simplest to the most complex of models. And the 2D Dimensional Constraint Manager (DCM) ensures a solid foundation for associating objects, so you can adopt BIM without having to "re-invent" your firm's workflow. With a BIM workflow, you can work faster while reducing drawing errors. Cutting-edge capabilities link plans, elevations, sections, perspectives, reports, and even rendered views, so a change to one updates the others. Query the model for information at any time, and using the IFC standard, move your building models to a growing selection of validation, analysis, and construction applications. For more, check out www.Vectorworks.net/BIM.



Courtesy of © Sousa Santos | Bruno Ferraz



Superior 2D

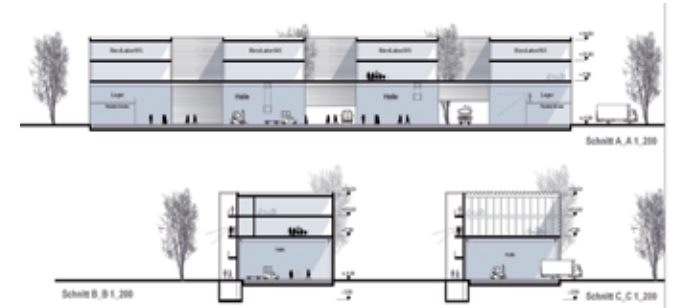
Produce high-quality construction documents with ease. The Vectorworks Architect application offers precision drafting tools, intelligent objects for building, detailing, MEP, furniture, millwork, machine parts, annotations, and thousands of free symbols from leading building product companies. A database enables you to store, manage, and recall notes. The Issue Manager keeps track of what, when, and to whom files were issued, and it automatically dates your title blocks. Batch print drawing sets or export them as multi-page PDFs at full or reduced sizes.

Automatic Analysis and Reporting

Stop counting items in your drawings. Automatic data tracking does the tedious work for you—built-in worksheets continually keep tabs. Use the framing module to effortlessly create framing models, plans, and elevations, as well as framing takeoffs for floors, walls, and roofs. Take advantage of 3D wall components and IFC-compatible slabs that produce dynamic and accurate wall sections and material estimates. The application goes further than automated schedules and materials takeoffs. It provides a user-defined, quick, and accurate way to assign custom data to any object and create unique reports. And, take advantage of our Solar Animation feature to conduct solar studies.



"There's been a marked maturing of approach to the development of Vectorworks in recent years which is very clear to long time users." -Colin Wardle, Architect, Design Two



Courtesy of Henn Architekten

Unique Presentations

Define and communicate your signature look with our advanced, high-end technology that's famous for helping our users achieve beautiful, graphically rich presentations. Tap into our large libraries of entourage and unlimited palettes of colors. Your style is not limited by "cookie-cutter" looks. Add gradients, tile and image fills, stipples, and hatching. Easily import digital images and graphics. Use our exclusive sketch rendering technology to change hard-lined drawings into soft, hand-sketched illustrations. Unique page layout capabilities make it simple to arrange presentation boards.

Renderworks

If you think that Renderworks™ looked good before—wait until you see this! We've teamed with the award-winning CINEMA 4D render engine to provide dramatic speed and quality gains that are integrated right into your application, so you won't waste time importing or exporting the model as the design changes. You'll have deft control of texture mapping and more intuitive shader options to create photorealistic or artistic renderings like never before. And, you'll really move with speed increases that are five to seven times faster for global illumination renders!

Intuitive: **Work The Way You Think**

Easy-to-use Interface and Drafting Tools

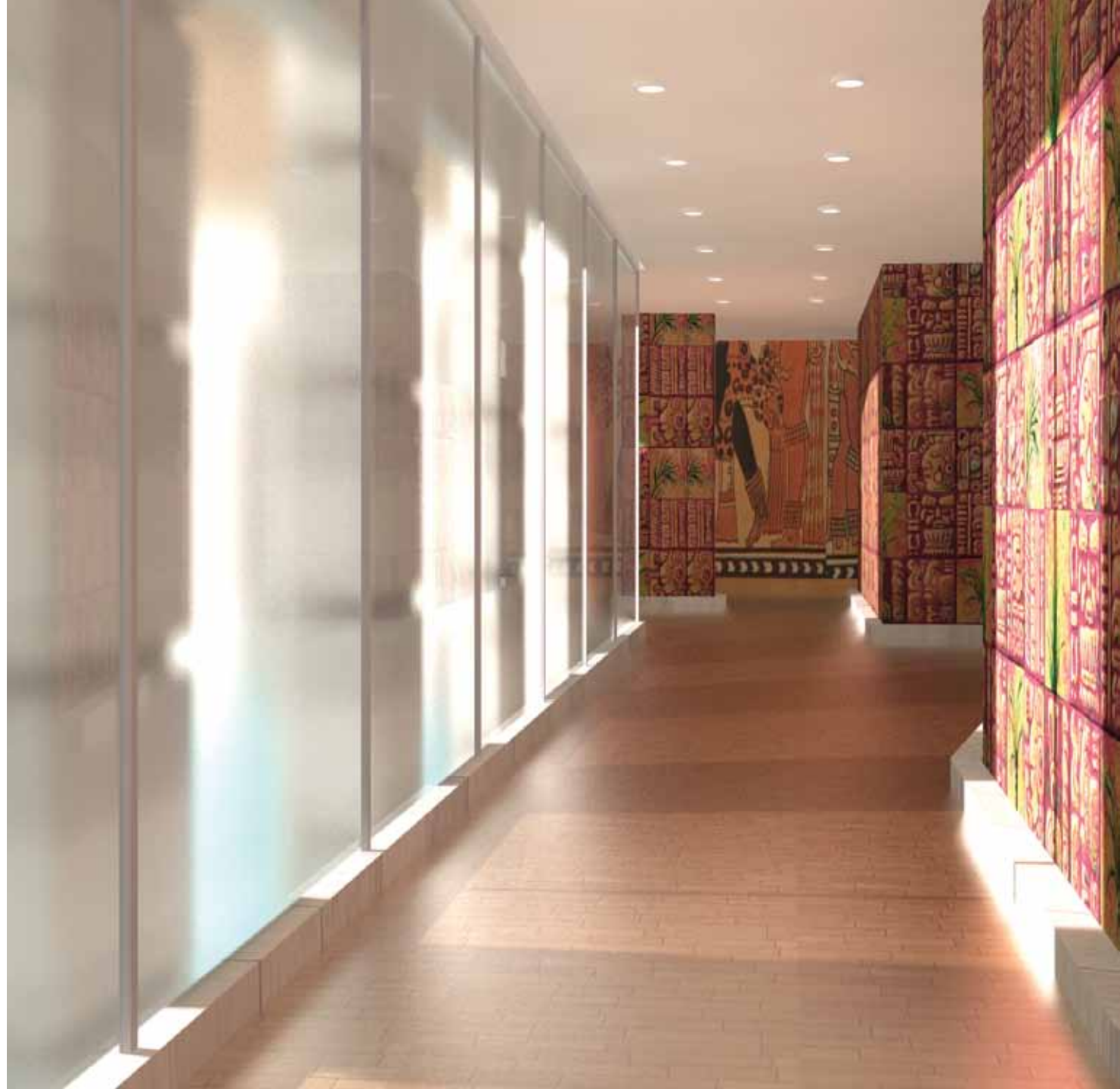
Do what you like to do best—design. You won't waste time getting up to speed because the Vectorworks Architect software's simple, customizable interface and what-you-see-is-what-you-get display make it easier to learn and use than standard CAD applications. No matter what you're switching from, the Vectorworks Architect application interface will be familiar. Vectorworks' SmartCursor™ technology replaces manual drafting tools, so even inexperienced CAD users can make the switch easily.

Tailored for Your Success

Work in tandem with the application. Vectorworks Architect is designed to think the way you think. In addition to designing with lines, arcs, and circles, you can design with walls, doors, windows, roofs, and slabs. The building objects are easy to edit and display in both 2D and 3D views. And with our scripting language, VectorScript, you can program everything from simple scripts that automate routine tasks to full-blown commercial applications.



Courtesy of Modo Forma



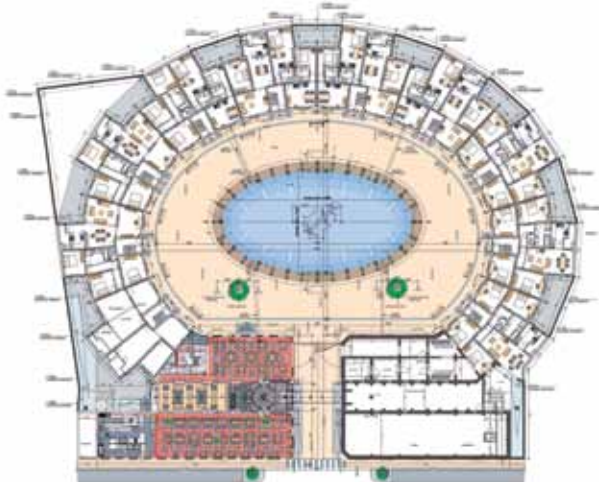
Smart:

Invest in Yourself

Affordable, customer-focused, and proven worldwide—the Vectorworks Architect software is a smart investment in you.

Affordable

You won't find another professional design application that includes so much for such a reasonable price. In one package, you get state-of-the-art tools and technology and the ability to work from conception to completion—a great value. You also get free software updates and affordable upgrades. With free technical support and affordable training options, you get value far beyond your initial savings. We never force subscriptions, so you're free to upgrade when and how you choose. As your business grows, we add extra seats at a discounted price. We offer a lot of great value and no hidden fees.



Courtesy of renovatie Zebrastraat Gent © Restyling | ASA



Courtesy of The Loop Kunstwerken © Arch & Teco

Customer Focused

Relax. We're here for you every step of the way. We listen and learn from your input—that's how the Vectorworks Architect software is created. So your relationship with us doesn't end when you install the software. We provide many channels for you to get the information you need. If you'd like training, take advantage of our multiple offerings: onsite, online, or in the classroom. If a technical issue stumps you, contact our technical support team for help. You can also tap into our Vectorworks community with over 450,000 enthusiastic users worldwide and user groups on the local level. E-mail listservs provide assistance around the clock, or you can use a service directory and job board to find help.

Vectorworks users often find themselves in Internet-based dialogues with our engineers and managers. We take pride in cultivating lasting relationships with our users, and we translate their feedback into positive product developments. With your input, we can continue to develop software that exceeds your expectations. After all, your success is our success.

Proven Worldwide

Be part of a long tradition of excellence. The company was founded over 20 years ago, and the Vectorworks product line now counts more than 450,000 professional designers worldwide. We listen to our customers and use their feedback to create a product that continually exceeds their expectations, delivering superior design flexibility and world-class graphics.



"There are many fine and talented folks who generously share their wit and wisdom with all. The online community is populated with various levels of Nemetschek Vectorworks employees (support personnel all the way to VPs) who chime in quite regularly." - Patrick J. Immel

The Vectorworks product line is the best-selling cross-platform professional CAD software and the preferred application for world-renowned and award-winning architects like Studio Daniel Libeskind, Platane Beres, Oscar Bressane, Roberto and Renato Candusso, Rios Clementi Hale Studios, Paulo Fernandes Pedrosa, tec Architecture, and Leers Weinzapfel, as well as countless others who power the design world forward every day.

The Vectorworks Architect software is produced by Nemetschek Vectorworks, Inc., a wholly owned subsidiary of Nemetschek AG, which is the world's leading IT company for the design, construction, and management of buildings and real estate. Nemetschek software solutions are used by design professionals in 142 countries and translated into eight languages.

With Vectorworks Architect 2011, the tradition continues.

Vectorworks Architect
Realize Your Most Inspired Visions



Vectorworks® Designer 2011

Realize Your Most Inspired Visions

contacto@vectorworks.com.mx
www.vectorworks.com.mx

Cover imagery courtesy of (left to right) © Michael Schannè, www.av1architekten.de; © Arch & Teco; DATENLAND, Erik Recke, www.datenland.de; Shige Shiozawa, A&A; © Visual by Jonathan Reeves, www.jr-architecture.co.uk_3

Tecnología Dinámica de México, S.A. de C.V.

Manuel López Cotilla 815, Col. del Valle. México D.F. CP: 03100 Tel: (55) 9116-0192, 01-800-087-1526

Co py right © 2008-2009 , DT Re sea rch , Inc. A ll R ight s Re serve d. DT Re sea rch a nd We b D T a re reg iste re d trad em a rks of DT Re sea rch , Inc .

Mac OS X 10.5.7 or later
QuickTime
Intel Core 2GHz or better
DVD-ROM drive (dual layer)
Screen resolution 1280 x 800 recommended
Display color depth 15 bit or higher

Windows XP SP 3
Windows Vista SP 2
Windows 7
QuickTime 7.6.0 to 7.6.6 (higher versions not recommended)
Pentium 2GHz or better
DVD-ROM drive (dual layer)
Screen resolution 1280 x 800 recommended
Display color depth 15 bit or higher

Vectorworks
RAM 1GB minimum, 2GB recommended
Hard drive space 10GB free

Vectorworks with Renderworks
RAM 2GB minimum, 4GB recommended
Hard drive space 10GB free

Vectorworks Designer
RAM 1GB minimum, 2GB recommended
Hard drive space 10GB free

Vectorworks Designer with Renderworks
RAM 2GB minimum, 4GB recommended
Hard drive space 10GB free

See www.vectorworks.net/sysreq/ for updated information.