

# Vectorworks® Designer 2011

Realize Your Most Inspired Visions





# Vectorworks® Designer 2011

Realize Your Most Inspired Visions

**Flexible:**

Enjoy the Freedom to Design the Way You Want

**Versatile:**

Create, Model, and Present with One Application

**Intuitive:**

Work the Way You Think

**Smart:**

Make a Good Investment in Yourself

***This is no ordinary year.***

*This is a milestone release for the Vectorworks Designer program. Incredible changes will transform your work—and your world—for the better. With the Vectorworks Designer 2011 software, you'll design like never before in a 3D environment that makes drafting and modeling in any view easy. You'll enhance your designs and presentations with exceptional text capabilities and many other new and improved features, and then render your designs beautifully with our powerful new render engine, CINEMA 4D. This breakthrough release will have a dramatic impact on both your workflow and your designs.*

## Flexible:

### Enjoy the Freedom to Design the Way You Want

With the Vectorworks Designer software, you're not limited to a prescribed workflow, so you have the freedom to work the way you want to work. Incorporate your existing approach to design to make the best use of the skills you already have in-house. Collaborate seamlessly with colleagues and coworkers and with other software applications. Here are some compelling reasons to purchase or upgrade:

### Freeform Modeling

Whether you're working in 2D or 3D, unified view mode lets you draft or model within a unified coordinate system. With an intuitive interface, you can design from any 3D view, and enjoy the superior quality that allows you to manipulate your model with ease. More accurate object information and better snapping make drawing in 3D so easy. The SmartCursor™ helps you by showing hints, like the angle from the previous segment, as you draw. Plus, an advanced suite of solid and NURBS modeling tools allows you to create any shape and easily explore organic geometry. Blend, twist, sculpt, deform, or punch holes.

### Design Anything

Many CAD applications restrict your ability to design beyond a core discipline. Whether your specialty is architecture, landscaping, or entertainment design, the Vectorworks Designer program gives you the freedom to create without having to learn or use additional applications. Anything's possible with the Vectorworks Designer 2011 software.



*"Speechless...a masterpiece! My absolute favorite!"*  
-Carlotta Birelli, Architect, Düttmann + Kleymann

### Efficient Workgroup Capabilities

Break up complex projects. Whether you're a sole practitioner collaborating with other professionals or a large firm dividing work among different members of the team, workgroup referencing provides a flexible way to split even the most complicated project into manageable pieces.

### Easy File Translation

Get on the cutting edge of digital practice, and move your building models fluidly between design, analysis, and construction packages with Vectorworks' IFC 2x3 translator. Import and export AutoCAD® 2011 (and earlier) files. Send out drawing sets as multi-page PDFs.

### Google Friendly

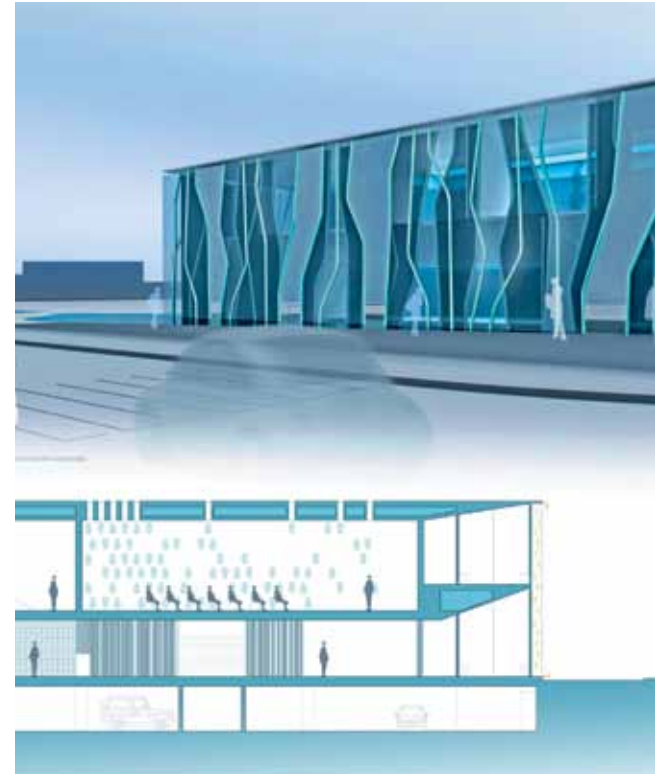
Import concept models from SketchUp® and access thousands of models from Google's 3D Warehouse. Export 3D models to Google Earth®.

### Endless Digital Images

Make your work even more compelling and easier to communicate with digital imagery. Import scans, digital photos, or web images. Import or export a wide array of image files, including Illustrator® EPS and native Photoshop® PSD files. Also, export your design for inclusion into your firm's marketing materials or website.

### Cutting Edge 3D

See it in 3D. Send models to CAD/CAM machines, CNC routers, and other 3D printers. The Vectorworks Designer package supports a number of standard 3D file formats, including Parasolid X\_T, IGS, SAT, KML, STL, and 3DS.



Courtesy of © Sousa Santos | Bruno Ferraz

### Completely Customizable Programming

Automate routine tasks or create full-blown add-on applications with our Pascal-based scripting language, VectorScript™. It's simple enough for a beginner, yet powerful enough for the most experienced CAD programmer.



## Supporting Sustainable Building

When your goal is sustainability, the Vectorworks Designer application is an indispensable tool. You can maximize materials and minimize energy expenditure with our built-in spreadsheets that calculate building performance through programming analysis (with parametric Space objects), detailed material take-offs, and lighting requirements. You can conduct sun studies with the solar animation command. And you can export data-rich building models using the Industry Foundation Classes (IFC) 2x3 interoperability standard used by energy simulation, material take-off and costing, and 4D construction sequencing applications. With such comprehensive data, you'll answer the "how many" and "how much" very early in the process, and ensure a smaller carbon footprint.

## Versatile:

### Create, Model, and Present with One Application

Move easily between tasks. From design concepts to construction documentation and every design phase in between, Vectorworks Designer marries precision drafting and flexible modeling with state-of-the-art technology. Create, model, and present easily and precisely with one application. With the Vectorworks Designer software, you can do it all.

The program boasts a comprehensive set of design tools to support your entire practice. You have complete functionality for:

### Powerful Conceptualization

Find your inspiration and start drawing. Or if you would like, import hand sketches, pictures of the site, and even documents from other applications. Invoke ideas in 2D, and explore them in 3D with freeform models.



Courtesy of Arquitectura AG, image by Armando Gutierrez



Courtesy of © Arch & Teco

### Innovative Building Information Modeling (BIM)

Whether you're streamlining costs, analyzing materials, increasing your energy efficiency, or just creating sophisticated designs, Vectorworks' robust BIM tools work hard for you. You can implement them at any phase, and they feature the smooth collaboration, focus on design, and advanced documentation that Vectorworks software is known for.



*"There are many fine and talented folks who generously share their wit and wisdom with all. The online community is populated with various levels of Nemetschek Vectorworks employees (support personnel all the way to VPs) who chime in quite regularly."* - Patrick J. Immel

With innovative and leading parametric technologies at its core, the Vectorworks Designer software has brought the most powerful tools for design to the BIM process. Our program ensures you the best possible platform for making the change to BIM, and it uses the world's most robust 3D modeling engine, Parasolid, to tackle the simplest to the most complex of models. And the 2D Dimensional Constraint Manager (DCM) ensures a solid foundation for associating objects, so you can adopt BIM without having to "re-invent" your firm's workflow. With a BIM workflow, you can work faster while reducing drawing errors. Cutting-edge capabilities link plans, elevations, sections, perspectives, reports, and even rendered views, so a change to one updates the others. Query the model for information at any time, and using the IFC standard, move your building models to a growing selection of validation, analysis, and construction applications. For more, check out [www.Vectorworks.net/BIM](http://www.Vectorworks.net/BIM).

### Superior 2D

Produce high-quality construction documents with ease. The Vectorworks application offers precision drafting tools, intelligent objects for building, detailing, MEP, furniture, millwork, machine parts, annotations, and thousands of free symbols from leading building product companies. A database enables you to store, manage, and recall notes. The Issue Manager keeps track of what, when, and to whom files were issued, and it automatically dates your title blocks. Batch print drawing sets or export them as multi-page PDFs at full or reduced sizes.

### Automatic Reporting and Analysis

Stop counting items in your drawings. Automatic data tracking does the tedious work for you. The application goes further than automated schedules, materials takeoffs, and bill of materials lists. It provides a user-defined way to assign specific data to any object and create custom reports. Since the report and the drawing can be linked, a change in one will update the other.

### Unique Presentations

Define and communicate your signature look with our advanced, high-end technology that's famous for helping our users achieve beautiful, graphically rich presentations. Tap into our large libraries of entourage and unlimited palettes of colors. Your style is not limited by "cookie-cutter" looks. Add gradients, tile and image fills, stipples, and hatching. Easily import digital images and graphics. Use our exclusive sketch rendering technology to change hard-lined drawings into soft, hand-sketched illustrations. Unique page layout capabilities make it simple to arrange presentation boards.



Courtesy of © Randy Brown Architects | Design Express

### Renderworks

If you think that Renderworks™ looked good before—wait until you see this! We've teamed with the award-winning CINEMA 4D render engine to provide dramatic speed and quality gains that are integrated right into your application, so you won't waste time importing or exporting the model as the design changes. You'll have deft control of texture mapping and more intuitive shader options to create photorealistic or artistic renderings like never before. And, you'll really move with speed increases that are five to seven times faster for global illumination renders!



Courtesy of DATENLAND, Erik Recke, [www.datenland.de](http://www.datenland.de)

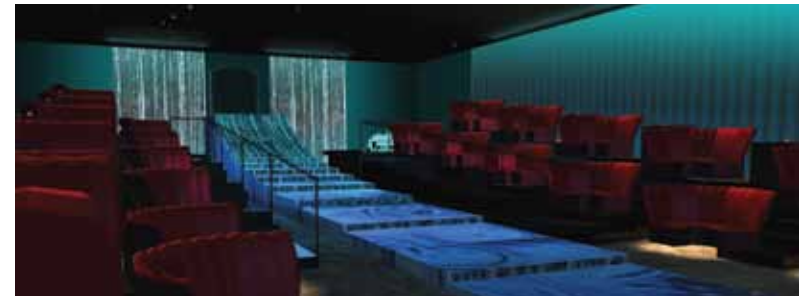
## **Intuitive:** **Work The Way You Think**

### **Easy-to-use Interface and Drafting Tools**

Do what you like to do best—design. You won't waste time getting up to speed because the software's simple, customizable interface and what-you-see-is-what-you-get display make it easier to learn and use than standard CAD applications. Vectorworks' SmartCursor technology replaces manual drafting tools, so even inexperienced CAD users can make the switch easily.

### **Tailored for Your Success**

Work in tandem with the application. The Vectorworks Designer software is designed to think the way you think, so you can design anything you dream up. The Vectorworks Designer product maximizes the exclusive technology from all our design products—Fundamentals, Architect, Landmark, and Spotlight. It offers the largest set of tools available in any CAD application. No matter what you're working on, there are specialized tools to help you get your job done efficiently and effectively. With our scripting language, VectorScript, you can program everything from simple scripts that automate routine tasks to full-blown commercial applications.



Courtesy of Diana Kesselschmidt

## Smart:

### Invest in Yourself

Affordable, customer-focused, and proven worldwide—the Vectorworks Designer software is a smart investment in you.

### Affordable

You won't find another professional design application that includes so much for such a reasonable price. In one package, you get state-of-the-art tools and technology and the ability to work from conception to completion—a great value. You also get free software updates and affordable upgrades. With free technical support and cost-effective training options, you get value far beyond your initial savings. We never force subscriptions, so you're free to upgrade when and how you choose. As your business grows, we add extra seats at a discounted price. We offer a lot of great value and no hidden fees.

### Customer Focused

Relax. We're here for you every step of the way. We listen and learn from your input—that's how the Vectorworks Designer software is created. So your relationship with us doesn't end when you install the software. We provide many channels for you to get the information you need. If you'd like training, take advantage of our multiple offerings: onsite, online, or in the classroom. If a technical issue stumps you, contact our technical support team for help. You can also tap into our Vectorworks community with over 450,000 enthusiastic users worldwide and user groups on the local level. E-mail listservs provide assistance around the clock, or you can use our service directory and job board to find help.

Vectorworks users often find themselves in Internet-based dialogues with our engineers and managers. We take pride in cultivating lasting relationships with our users, and we translate their feedback into positive product developments. With your input, we can continue to develop software that exceeds your expectations. After all, your success is our success.

### Proven Worldwide

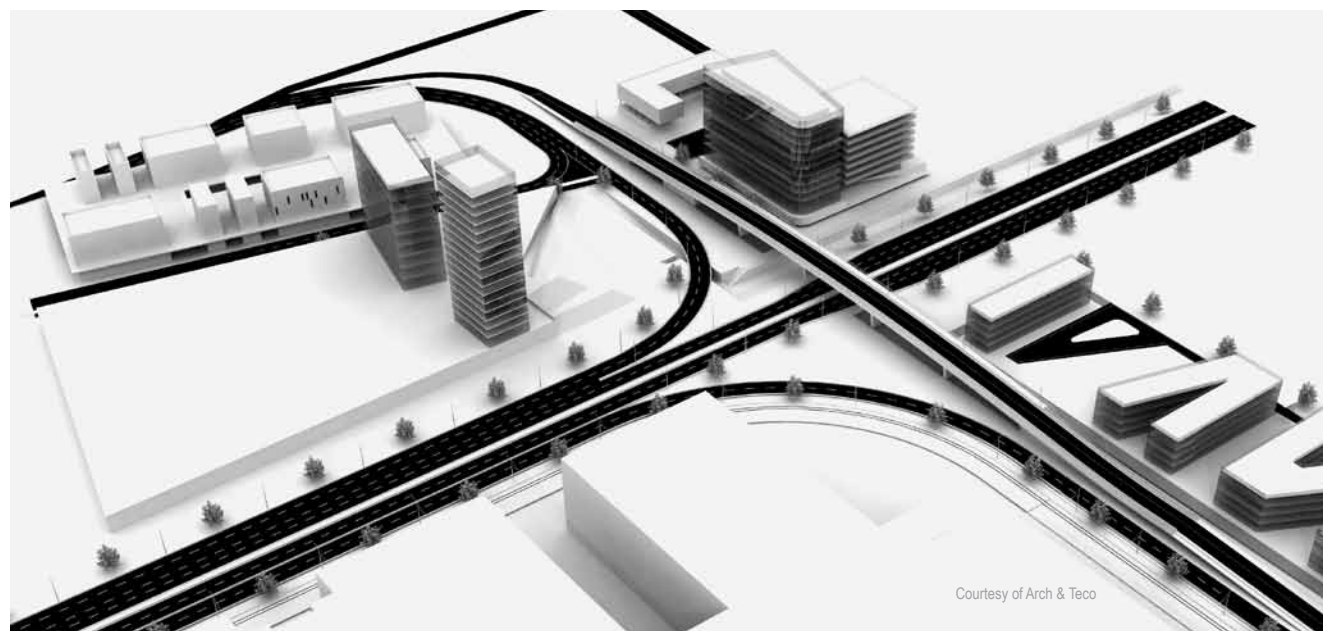
Be part of a long tradition of excellence. The company was founded 25 years ago, and the Vectorworks product line now counts more than 450,000 professional designers worldwide.

The Vectorworks product line is the best-selling cross-platform professional CAD software and the preferred application for world-renowned and award-winning designers who move the design world forward every day.

The Vectorworks product line is produced by Nemetschek Vectorworks, Inc., a wholly owned subsidiary of Nemetschek AG, which is the world's leading IT company for the design, construction, and management of buildings and real estate. Nemetschek software solutions are used by design professionals in 142 countries and translated into eight languages.

With the Vectorworks Designer 2011 software, the tradition continues.

Vectorworks Designer  
Realize Your Most Inspired Visions





depots und werkstätten berlin  
of the german museum



# Vectorworks® Designer 2011

Realize Your Most Inspired Visions

---

contacto@vectorworks.com.mx  
www.vectorworks.com.mx

Cover imagery courtesy of (left to right) © Visual by Jonathan Reeves - www.jr-architecture.co.uk; Office of James Burnett; Nicholas Dunand; Freelance Designer; Morris Architects-Morris Terra; Jim Woodward, Exhibit Logic LLC

## Tecnología Dinámica de México, S.A. de C.V.

Manuel López Cotilla 815, Col. del Valle. México D.F. CP: 03100 Tel: (55) 9116-0192, 01-800-087-1526

Co py right © 2008-2009 , DT Re sea rch , Inc. A ll R ight s Re serve d. DT Re sea rch a nd We bDT a re reg istere d trad em a rks of DT Re sea rch , Inc .

Mac OS X 10.5.7 or later

QuickTime

Intel Core 2GHz or better

DVD-ROM drive (dual layer)

Screen resolution 1280 x 800 recommended

Display color depth 15 bit or higher

Windows XP SP 3

Windows Vista SP 2

Windows 7

QuickTime 7.6.0 to 7.6.6 (higher versions not recommended)

Pentium 2GHz or better

DVD-ROM drive (dual layer)

Screen resolution 1280 x 800 recommended

Display color depth 15 bit or higher

Vectorworks

RAM 1GB minimum, 2GB recommended

Hard drive space 10GB free

Vectorworks with Renderworks

RAM 2GB minimum, 4GB recommended

Hard drive space 10GB free

Vectorworks Designer

RAM 1GB minimum, 2GB recommended

Hard drive space 10GB free

Vectorworks Designer with Renderworks

RAM 2GB minimum, 4GB recommended

Hard drive space 10GB free

See [www.vectorworks.net/sysreq/](http://www.vectorworks.net/sysreq/) for updated information.